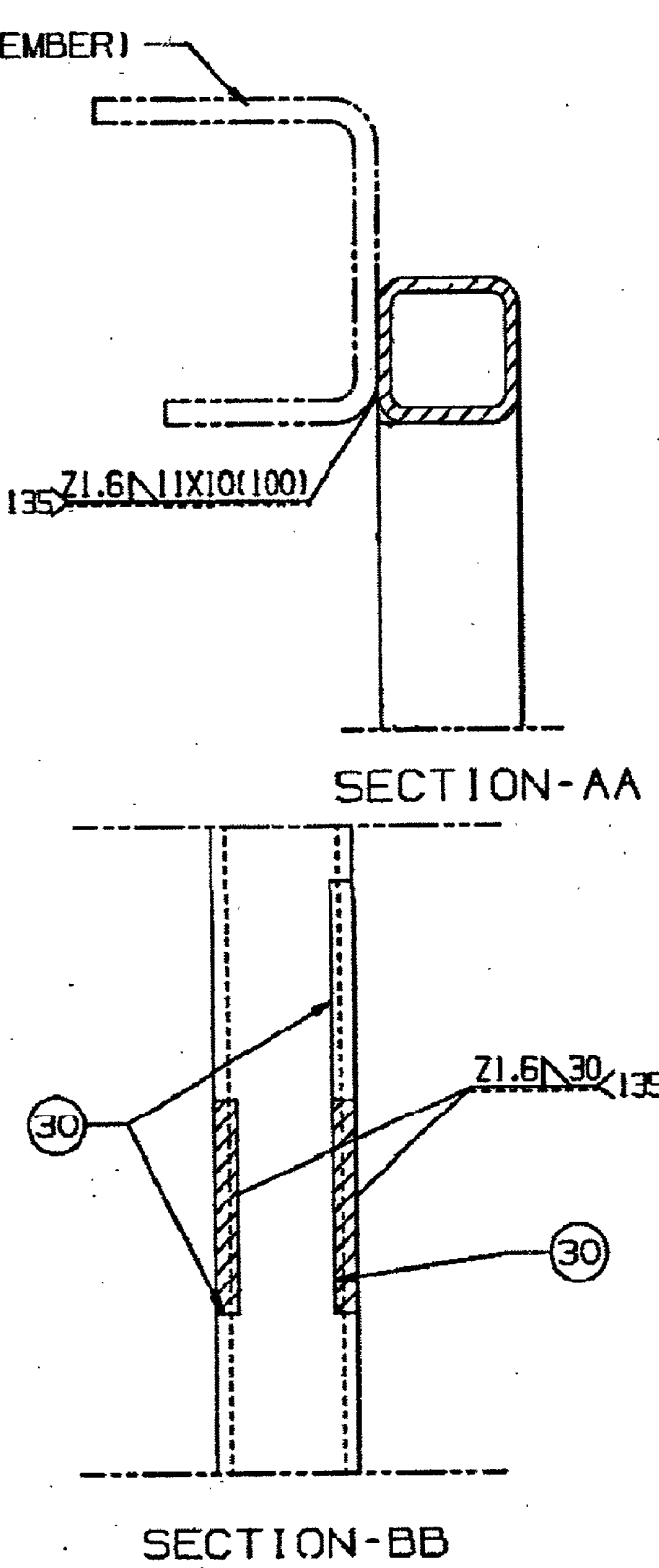
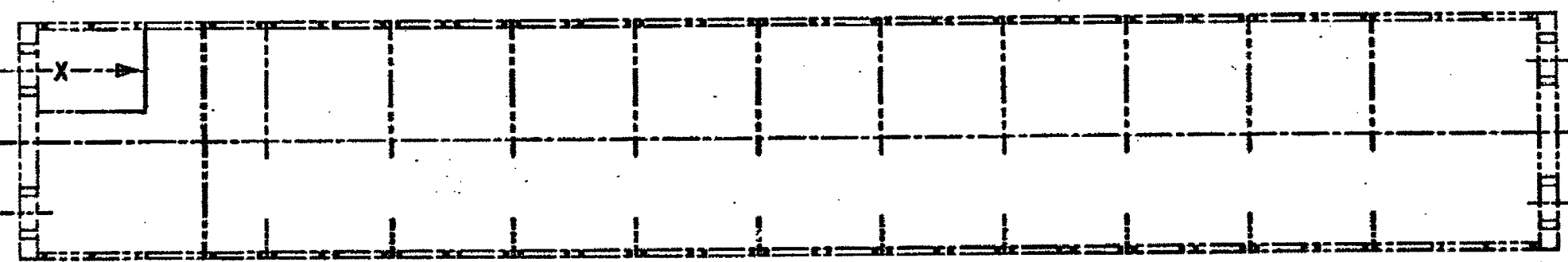
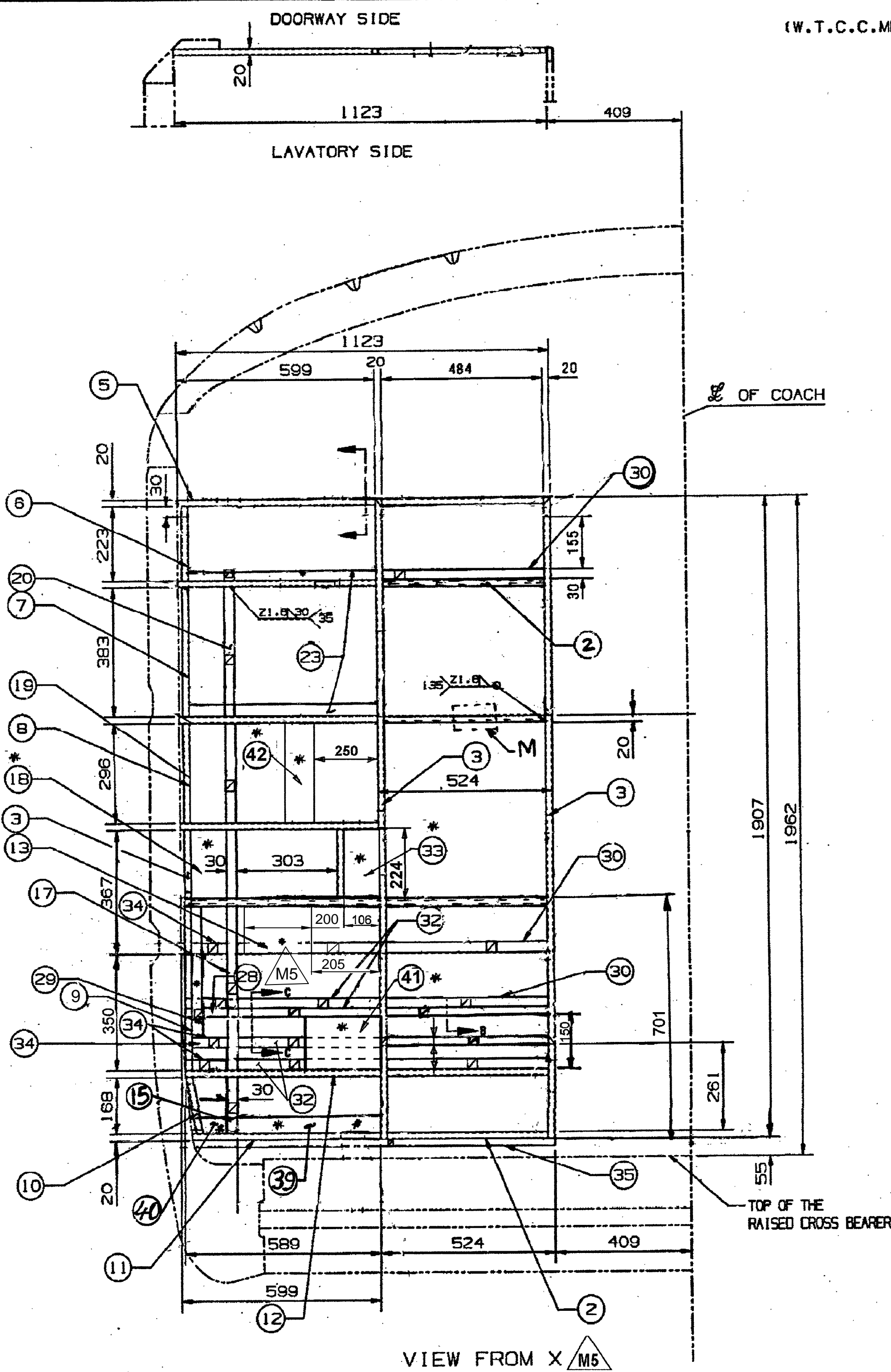


THIS DRAWING IS THE INTELLECTUAL PROPERTY OF RAIL COACH FACTORY, KAPURTHALA. IT IS NOT TO BE REPRODUCED OR TRANSMITTED IN ANY FORM OR BY ANY MEANS, ELECTRONIC OR MECHANICAL, INCLUDING PHOTOCOPYING, RECORDING, OR BY ANY INFORMATION STORAGE AND RETRIEVAL SYSTEM, WITHOUT PERMISSION FROM CHIEF DESIGN ENGINEER, RAIL COACH FACTORY, KAPURTHALA.



42	PLATE	296X100X3.15	1	R107702315	IS:5986-02 Gr-205	
41	PLATE	300X175X3.15	1	R107702315	IS:5986-02 Gr-205	
40	SUPPORT	3.15X50X56	1	R107702315	IS:5986-02 Gr-205	
39	SUPPORT	3.15X50X464	1	R107702315	IS:5986-02 Gr-205	
38	COVER SHEET	2X79X203	2	R135602200	IS:409 M	NIL
37	CHANNEL	2X80X205X80	1	R135602200	IS:409 M	L=250
36	BACK PIECE	3.15X30X303	1	R107702315	IS:5986-02 Gr-205	NIL
35	BACK PIECE FOR J-MOLDING	3.15X30X1082	1	R107702315	IS:5986-02 Gr-205	NIL
34	SUPPORT	3.15X30X107	3	R107702315	IS:5986-02 Gr-205	NIL

33	BACK PIECE	3.15X106X224	1	R107702315	IS:5986-02 Gr-205	
32	SUPPORT	3.15X30X429	3	R107702315	IS:5986-02 Gr-205	
31	SCREWING PIECE	3.15X25X150	1		IS:409 M	
30	SUPPORT	3.15X30X484	6	R107702315	IS:5986-02 Gr-205	
29	BACK PIECE	3.15X40X370	1	R107702315	IS:5986-02 Gr-205	
28	SUPPORT	3.15X30X526	1	R107702315	IS:5986-02 Gr-205	
27	SUPPORT	3.15X25X312	*	R107702315	IS:5986-02 Gr-205	
26	SUPPORT	3.15X23X256	*	R107702315	IS:5986-02 Gr-205	
25	SUPPORT	3.15X30X153	*	R135602315	IS:409 M	
24	BACK PIECE	6X20X50	1	NIL	IS:2062-1992 Fe-410 MB	NIL
23	SUPPORT	3.15X40X566	2	R107702315	IS:5986-02 Gr-205	
22	SUPPORT	3.15X30X566	*		IS:409 M	
21	BACK PIECE	3.15X30X223	1		IS:409 M	
20	BACK PIECE	3.15X30X360	1	R107702315	IS:5986-02 Gr-205	
19	SUPPORT	3.15X30X235	1	R107702315	IS:5986-02 Gr-205	
18	BACK PIECE	3.15X115X224	1	R107702315	IS:5986-02 Gr-205	
17	BACK PIECE	3.15X30X473	1	R107702315	IS:5986-02 Gr-205	
16	SUPPORT	3.15X30X68	2		IS:409 M	
15	SUPPORT	3.15X30X168	1	R107702315	IS:5986-02 Gr-205	
14	SUPPORT	3.15X80X343	2		IS:409 M	
13	BACK PIECE	3.15X140X200	1	R107702315	IS:5986-02 Gr-205	
12	SO.TUBE	20X20X2 L=589.00	1	R103636007	IS:4923-85 HF SHS YST-240	
11	SO.TUBE	20X20X2 L=565.00	1	R103636007	IS:4923-85 HF SHS YST-240	
10	SO.TUBE	20X20X2 L=168.00	1	R103636007	IS:4923-85 HF SHS YST-240	
9	SO.TUBE	20X20X2 L=473	1	R103636007	IS:4923-85 HF SHS YST-240	
8	SO.TUBE	20X20X2 L=236.00	1	R103636007	IS:4923-85 HF SHS YST-240	
7	SO.TUBE	20X20X2 L=383.00	1	R103636007	IS:4923-85 HF SHS YST-240	
6	SO.TUBE	20X20X2 L=223.00	1	R103636007	IS:4923-85 HF SHS YST-240	
5	SO.TUBE	20X20X2 L=589.00	5	R103636007	IS:4923-85 HF SHS YST-240	
4	SO.TUBE	20X20X2 L=281.00	2		IS:409 M	IS:4923-85 HF SHS YST-240
3	SO.TUBE	20X20X2 L=1907	2	R103636007	IS:4923-85 HF SHS YST-240	
2	SO.TUBE	20X20X2 L=484.00	6	R103636007	IS:4923-85 HF SHS YST-240	
1	SO.TUBE	20X20X2 L=484.00	6	R103636007	IS:4923-85 HF SHS YST-240	

- NOTE:-
- ITEM 24 TO BE SUPPLIED LOOSE & WELDED AT SHELL ASSEMBLY STAGE TO SUIT AT SITE.
 - ITEM MARKED THUS * TO BE WELDED ON LAVATORY SIDE.
 - ITEM MARKED THUS @ TO BE WELDED ON BOTH SIDE.
 - ITEM MARKED THUS 1/2 TO BE WELDED ON DOORWAY SIDE.
 - ASSY TO BE COLD PHOSPHATED AND APPLY ONE COAT OF RED OXIDE ZINC CHROMATE PRIMER TO IS:2074-92 TO BE GIVEN ALL OVER.
 - NECESSARY CHAMFER TO BE PROVIDED ON THE BACK PIECES TO ACCOMMODATE WELD METAL.
 - SUPPLIER'S INITIAL TO BE PUNCHED ON P/F/FRAME AT MARKED THUS "M" WITH 5MM THICK LETTERS.
 - ALL HORIZONTAL & VERTICAL SO. TUBES TO BE WELDED TOGETHER AS 2-1/2" (ALL ROUND WELDING)
 - ASSY TO BE PROTECTED AS PER PROTECTION PROCEDURE NO. W-100049.
 - IN ITEM 31, M5 HOLE TO BE PROVIDED AT SHELL ASSY. STAGE.

ANY MANUAL ALTERATION SHALL AUTOMATICALLY RENDER THIS DRAWING INVALID. FOR UNTOLERANCED DIMENSIONS REFER MDG0008

DATE OF FIRST ISSUE: 08/07/1997

CGM BY: [Signature]

WELD LENGTH: NIL

ITEM: 1

GROUP: BODY SHELL

FILE: //cc10810e.prt (2D)

WEIGHT: 31.000 KG

S.AREA: NIL

LENGTH/DIA: NIL

WIDTH/THICK: NIL

HEIGHT: NIL

SCALE: 1:10

SSE/REC: CDB

CHK: HARB

DWR: DVDR

PL NO. NIL

DRG.NO. CC10810

SIZE: A (SHEET) 1/1